

<http://www.luxierusa.com/>

Installation Guide

Twist Tub and Shower Faucet

Single Handle Tub and Shower Trim



Tools you will need:



Adjustable Wrench



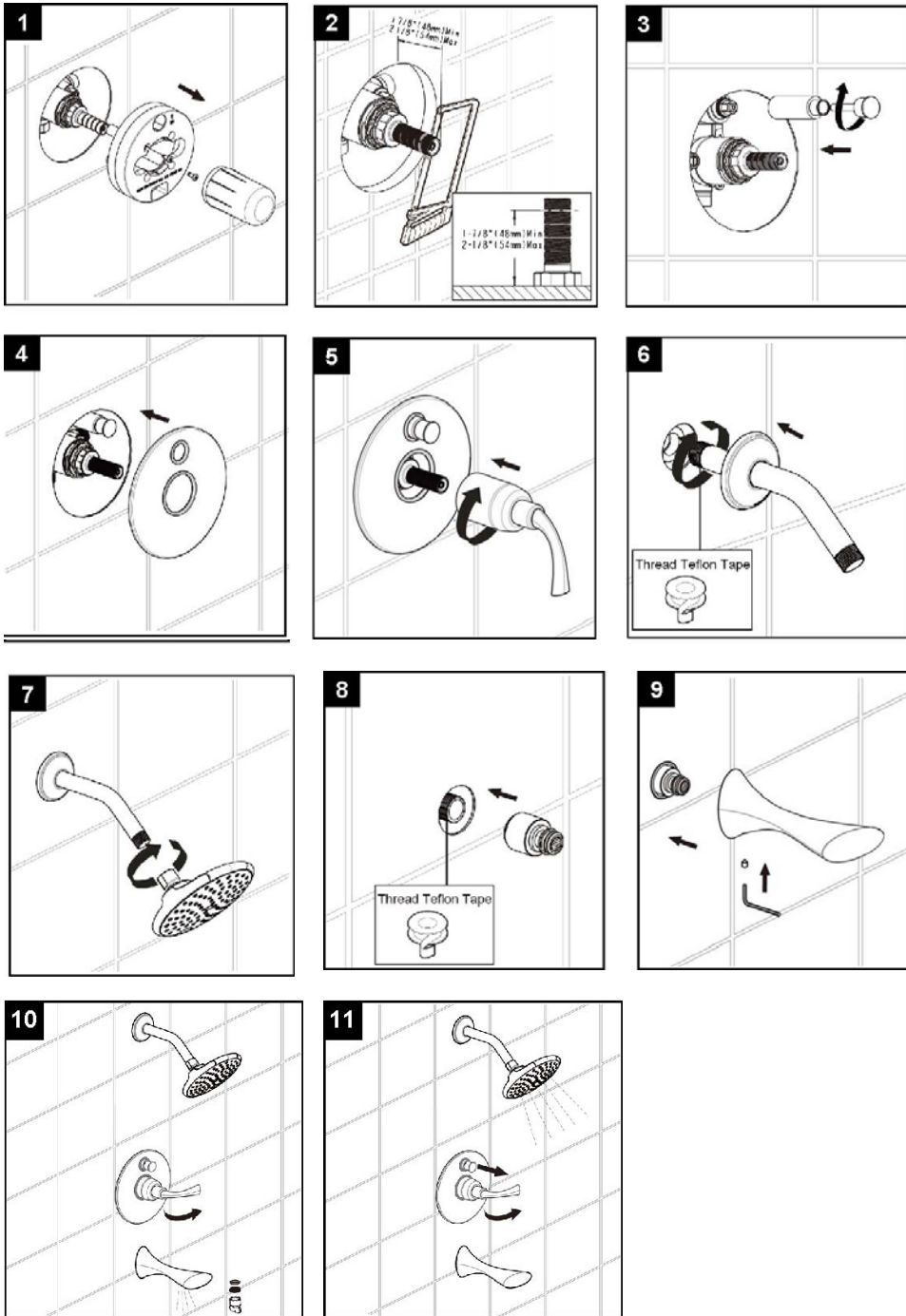
Pipe Tape



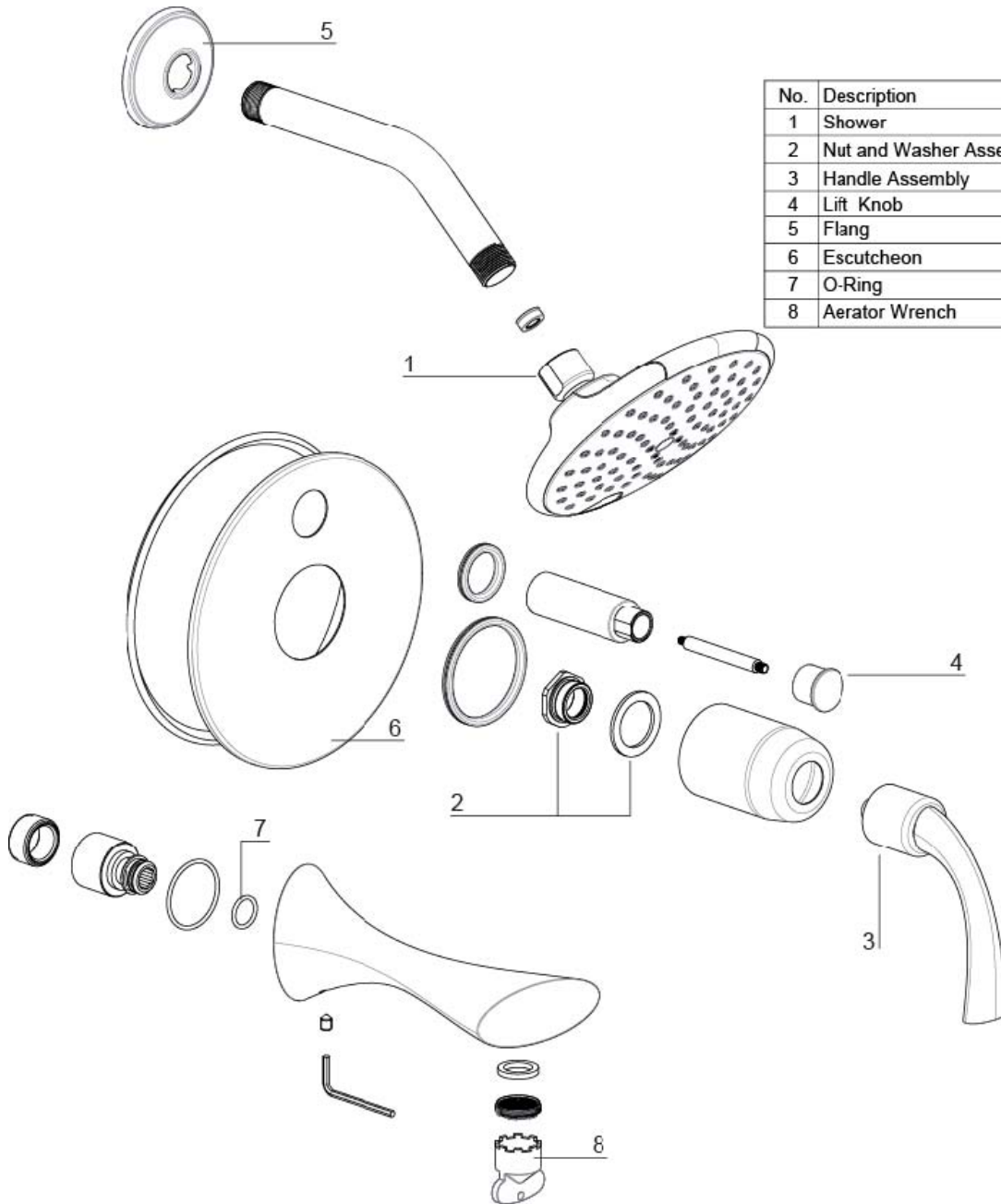
Groove join pliers

SAFETY TIPS:

- If you use soldering for the installation of the faucet, the seats, cartridges and washers will have to be removed before using flame. Otherwise, warranty will be void on those parts.
- Cover your drain to avoid losing parts.
- 32°F-131°F



Replacement Parts



No.	Description	Part No.
1	Shower	5F0M0090CP
2	Nut and Washer Assembly	9Q1166NT
3	Handle Assembly	9Q165CP
4	Lift Knob	5H0C0131CP
5	Flang	5L0C0530CP
6	Escutcheon	5L0C0379CP
7	O-Ring	612053062
8	Aerator Wrench	51019403PL



Model Number:
CL107-TB
CL107-TC

Trouble-Shooting

If you've followed the instructions carefully and your faucet still does not work properly, take these corrective steps.

<u>Problem</u>	<u>Cause</u>	<u>Action</u>
-Leaks underneath Shower Head.	-Retainer Shower Head has come loose. O-ring is dirty or damaged.	-Tighten the retainer nut. Clean or replace O-ring.

Limited Lifetime Warranty

Luxier USA warrants to the original purchaser that its products will be free from defects in workmanship and materials. This warranty does not cover any other labor or service charges associated with the removal, repair, or reinstallation of Luxier products. This express warranty does not apply to products that have been damaged as a result of misuse, abuse, negligence, accident, faulty installation or maintenance practices and/or used in any manner contrary to those recommended by the manufacturer.